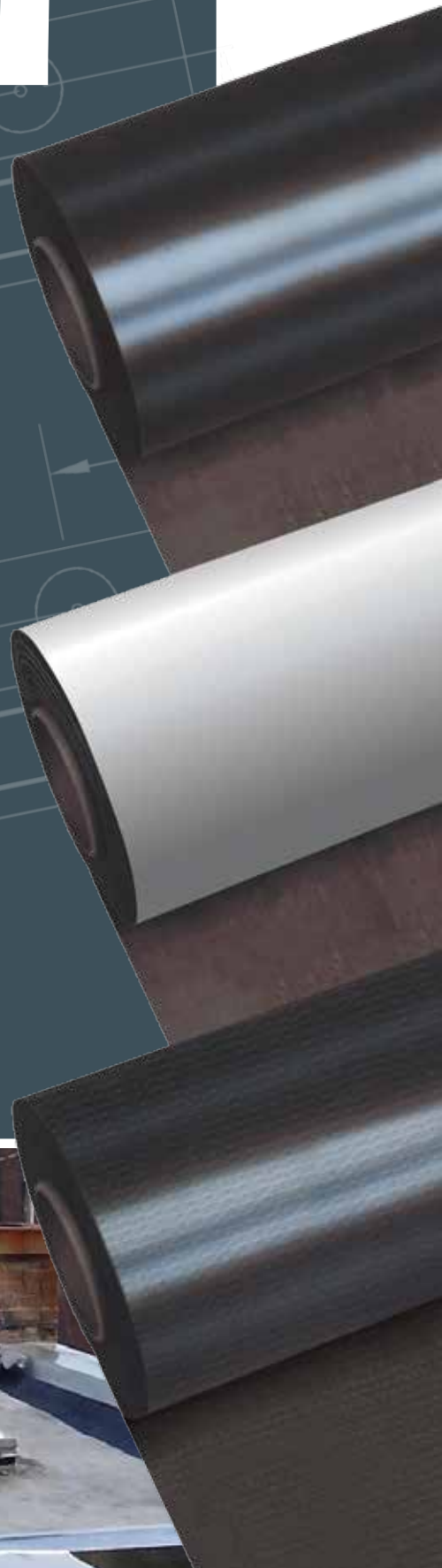


# EPDM

ROOFING SYSTEMS



*"The name trusted in roofing since 1906"*



## OUR PROMISE

### **THROUGH ONGOING INTERCHANGE OF EXPERIENCES WITH CONTRACTORS, MULE-HIDE KEEPS ON TOP OF THE LATEST ROOFING REQUIREMENTS AND SOLUTIONS**

Trusted in roofing since 1906, Mule-Hide is the right choice for all kinds of installations. Our time-tested and proven systems are affordable and easy to install, and they meet even the strictest demands of today's commercial, industrial, and institutional buildings — always with an eye on the future.

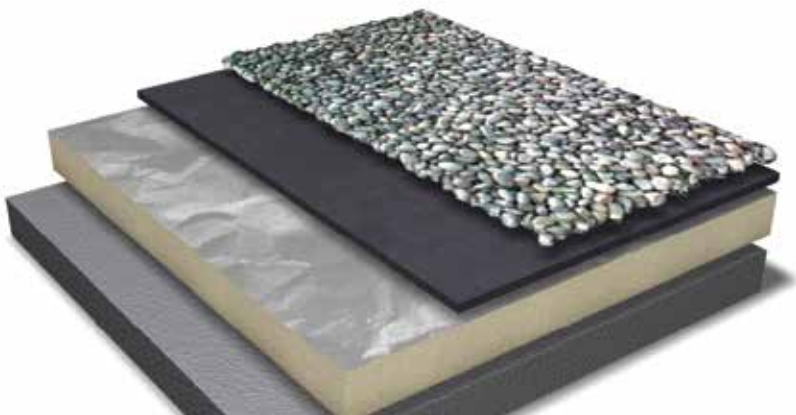
We can help you with everything from membrane selection to determining the best way to ensure a watertight roof. And because providing total roofing systems is our business, you can count on Mule-Hide to ensure the compatibility and performance of any and every component you choose.

## SYSTEM BENEFITS

### **MULE-HIDE SYSTEMS MAXIMIZE LABOR SAVINGS & ROOF LIFE-CYCLE SO CONTRACTORS MAXIMIZE PROFITS BY SELLING VALUE NOT LOW PRICE**

Mule-Hide EPDM membranes can boast years of proven performance, covering a wide range of lowslope roofing applications, with systems for ballasted, mechanically attached and fully adhered.

- The Fully Adhered System using Acrylic Water Base Bonding Adhesive for fast installation means maximized installed cost value
- Fully Adhered Systems are ideally suited for irregular building configurations as well as steeply sloped commercial roofs, using solvent-based adhesive
- Simple & versatile Mule-Hide Tape Products make installation faster and easier
- UL & FM listed assemblies available



## WARRANTY PROGRAM

Mule-Hide offers an extensive warranty program with several options for commercial projects, including Membrane Warranties, Standard System Warranties and Premium System Warranties. Complete information on the warranties can be found at our website: [www.mulehide.com](http://www.mulehide.com), under the Warranty Information tab.

A Mule-Hide representative inspects all commercial projects for which a Standard System Warranty or a Premium System Warranty is requested prior to the issuance of the warranty. To be eligible for a System Warranty (either Standard or Premium), the installing contractor must be a Mule-Hide Warranty Eligible contractor. More information on becoming a Mule-Hide Warranty Eligible Contractor can be found at our Web site: [www.mulehide.com](http://www.mulehide.com), under the Warranty Information tab.

Mule-Hide also offers a selection of Membrane Warranties that are available for residential (single family dwelling) projects.

## STRENGTH

EPDM is a high tensile strength, single-ply membrane ideal for long-term watertight integrity. EPDM is lightweight, making it ideal for new construction and retrofit systems without adding excessive weight to the roof deck. Meets or exceeds ASTM standards.

## FLEXIBILITY

The membrane remains flexible in hot and cold temperatures so it will not split or crack.

## LONG LIFECYCLE

It provides excellent resistance to ozone and UV and can handle the coldest winters or the desert heat.

## PRODUCT INFORMATION

### THE EPDM SYSTEMS YOU NEED FROM THE PEOPLE YOU TRUST

Mule-Hide membranes are manufactured under strict quality control and are available in a wide range of sheet sizes, lengths and membrane thicknesses through the largest nationwide distribution channel.

#### STANDARD BLACK EPDM MEMBRANE

- The most economical singly-ply membrane
- Ideal for ballasted and fully adhered systems

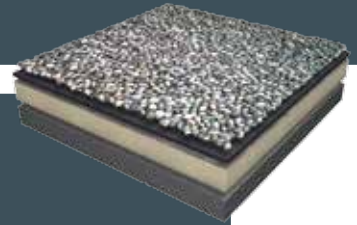
#### STANDARD REINFORCED EPDM MEMBRANE

- Reinforced with tough polyester fabric for superior fatigue, tear, & puncture resistance
- Ideal for mechanically attached systems

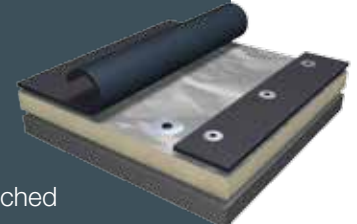
#### WHITE-ON-BLACK EPDM MEMBRANE

- Reflects the sunlight & cools the building interior leading to lower BTU usage and energy costs
- Fully adhered application is required
- Meets CA Title 24, CRRC® rated and ENERGY STAR® listed

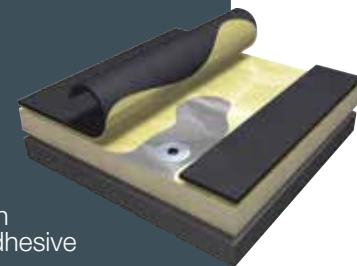
EPDM  
Ballasted



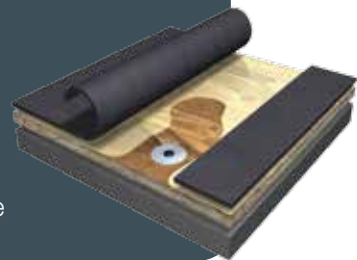
EPDM  
Mechanically-Attached



EPDM  
Fully-Adhered with  
Solvent-Based Adhesive



EPDM  
Fully-Adhered  
with Water Base  
Bonding Adhesive



MATERIAL	MATERIAL THICKNESS	STANDARD WIDTH	STANDARD LENGTH	AVAILABLE PRE-CLEANED	AVAILABLE WARRANTY
Standard Black EPDM Membrane	45 mil	7' - 50'	50' - 100'		10, 15 yr
	60 mil	10' - 40'	50' - 100'	Yes	10, 15, 20 yr
	90 mil	10'	50' - 100'	Yes	10, 15, 20, 30 yr
Standard Black EPDM Membrane (Pre-Taped)	45 mil	10'	100'		10, 15 yr
	60 mil	10'	100'		10, 15, 20 yr
Standard Reinforced EPDM Membrane	45 mil	8' - 10'	100'	Yes	10, 15 yr
	60 mil	8' - 10'	100'	Yes	10, 15, 20 yr
Standard Reinforced EPDM Membrane (Pre-Taped)	45 mil	10'	100'		10, 15 yr
	60 mil	10'	100'		10, 15 yr
White-On-Black EPDM Membrane	45 mil	20'	100'		10, 15 yr
	60 mil	10'	50' - 100'		10, 15, 20 yr
White-On-Black EPDM Membrane (Pre-Taped)	45 mil	20'	100'		10, 15 yr
	60 mil	10' - 20'	100'		10, 15, 20 yr
FR Reinforced EPDM Membrane	45 mil	8' - 10'	100'		10, 15 yr
	60 mil	8' - 10'	100'		10, 15 yr

This chart is used for a general guideline. Additional sizes may be available. Please contact Mule-Hide Customer Service at 800-786-1492 or go to our website at [www.mulehide.com](http://www.mulehide.com) for specific product information.



## PRE-TAPED EPDM

### FACTORY-CONTROLLED PRODUCTION ENSURES RELIABLE SEAMING WITH GREATER PEEL AND SHEAR STRENGTH AND NO ENTRAPPED AIR BUBBLES

- Ensures consistent placement of the tape to maximize the splice area by controlling the placement within +/- 1/8"
- Can improve seaming productivity by up to 75% to get from job to job fast and reduce labor
- Reduces materials to load on roof – plus less waste and disposal

### WIDE RANGE OF SIZES

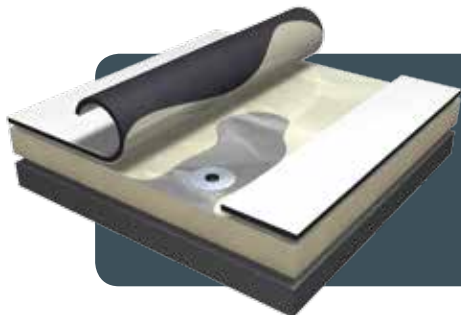
- Available in sizes to meet the needs of various project requirements
- 2-Pack (2 sheets per core) means quicker roof loading and reduced waste – also ideal when narrow width sheeting is needed
- Wide-width dusted sheeting for large, wide-open projects.
- Both 3" and 6" tape widths



## ACRYLIC WATER-BASE BONDING ADHESIVE

### FULLY ADHERING EPDM WITH MULE-HIDE ACRYLIC WATER-BASE BONDING ADHESIVE REQUIRES FEWER WORKERS. EASIER SHEET POSITIONING MEANS FEWER CALLBACKS

- Faster roofs
- Labor savings
- Crew retention
- Fully adhered
- Mechanically attached & ballasted (only for FA-EPDM)



## WHITE-ON-BLACK EPDM MEMBRANE

- Reflects the sunlight & cools the building interior leading to lower BTU usage and energy costs
- Fully adhered application is required
- Meets CA Title 24, CRRC® rated and ENERGY STAR® listed



## WHY MULE-HIDE?

### **WE HELP YOU GROW YOUR BUSINESS**

When you choose Mule-Hide roofing materials for a project, you get more than just the best products from a company that's been helping contractors for over a century now. You also get individualized service designed to help you get the job done right the first time – so you can get on to the next job, and get that one done right, as well. Mule-Hide products are available through the nation's largest distribution channel, and we truly care about your success.



## EPDM ACCESSORIES



- Adhesives – Acrylic Water Base Bonding Adhesive (solvent based), Black Splice Adhesive, White Splice Adhesive, Single Seal Adhesive (black only)
- Seam Cleaners – black and clear
- Tapes & Tape Primer – seams are completed fast and easy with In-Seam Tape and Tape Primer
- Sealants & Caulks – Pourable Sealer, Lap Sealants (black & white), Water Cut-off Mastic
- Reinforced Membrane Strips – Standard 6" RMS, or fast and easy, 6" RMS with Tape – reduces installation time since no Splice Adhesive is needed
- Flashings – Uncured Flashing Tape, Uncured Flashing, and Cured Cover Tape
- Pipe Boots & pre-fabricated accessories – Premolded EPDM Pipe Boots, Premolded EPDM Pipe Boots with Tape for pipe flashings and penetrations – just prime peel, stick, and caulk edges. Pre-cut Corners (inside/outside) can also be used for t-joint patches. Pourable Sealer Pockets – allow easy field fabrication versus metal. Popular Walkway Pads.
- Fastener Accessories – Drill Point and Thread Point (for insulation only) HDP & EHD Fasteners, Insulated Plates and Seam Plates
- All Purpose Bar – use as anchor, batten, and termination bar
- Polyisocyanurate Insulation
- DensDeck®
- SECUROCK®



Contact Mule-Hide Products for specific product approvals and ratings. Featured industry association/organization logos are U.S. registered trademarks. Mule-Hide is an AIA registered CES provider. Energy Star is only valid in the United States for Roofing Products.

*“The name trusted in roofing since 1906”*

**Customer Line: 800-786-1492 • [www.mulehide.com](http://www.mulehide.com)**

*Check our website monthly for the latest updates & technical bulletins.*

**National Support Center • 1195 Prince Hall Drive • Beloit, WI 53511 • tel. 608.365.3111 • fax. 608.365.7852**

The information herein should not be considered all-inclusive and should always be accompanied by a review of the Mule-Hide specifications and guidelines and good application practices.

This information herein is based upon data and knowledge considered to be true and accurate at the time of printing and is provided for the reader's consideration, investigation and verification. No statement made by anyone may supersede this information, except when done in writing by Mule-Hide Products Co., Inc. Mule-Hide Products Co., Inc. does not warrant any results to be obtained. Statements concerning possible use of Mule-Hide products are made without knowledge of your particular roof and such an application may not be fit for your particular purpose. MULE-HIDE DISCLAIMS ALL WARRANTIES, INCLUDING THE IMPLIED WARRANTY OF MERCHANTABILITY AND FITNESS FOR A PARTICULAR PURPOSE, except written warranties attached to Mule-Hide products and written warranties signed by an officer of Mule-Hide.

Visit the Mule-Hide website at [www.mulehide.com](http://www.mulehide.com) prior to any installation for updated technical specifications and details. Mule-Hide is a U.S. registered trademark. DensDeck is wholly owned registered trademark of Georgia-Pacific Gypsum LLC/Georgia-Pacific Wood Products LLC. SECUROCK is wholly owned registered trademark of USG Corporation. All rights reserved.

